



Cal Sailing Club

# Racing Course Diagrams

v2023-03

# Introduction

- a. Each slide indicates a possible layout of buoys. A variety of courses can be sailed on each layout.
- b. CSC usually uses temporary buoys for all racing marks. These are orange, inflatable, and 2-3 feet in diameter (pictured top right)
- c. The electronic starting horn buoy, Ollie, (pictured bottom right) may also be a mark, usually as one end of the starting line.
- d. All marks are to be left to port unless otherwise specified (eg. a gate)
- e. These courses are modified from courses listed in appendix S of [RRS 2025-2028](#). Modifications are intended to accommodate smaller fleets and/or use fewer buoys.

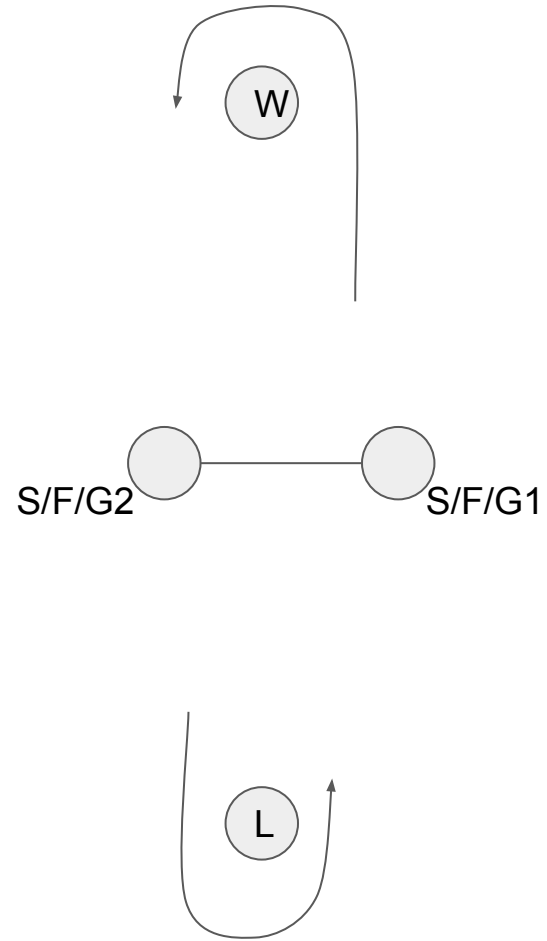


# 1. Windward-Leeward

## Courses:

- Start-W-L-Finish (multiple laps are possible)
- Start-W-L-W-Finish (downwind finish)
- S-W-Gate\*-W-L-Finish

\*to sail the course you must pass through the gate placing the G1 on port and G2 on starboard

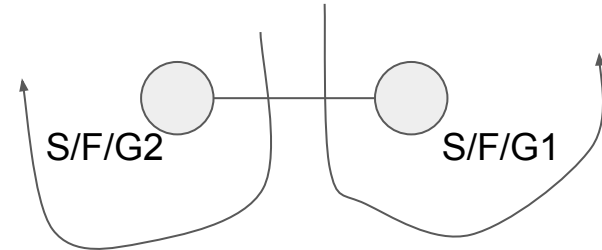
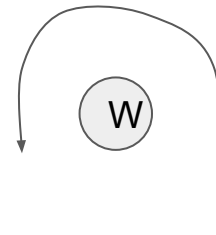


## 2. Windward-Leeward, leeward finish

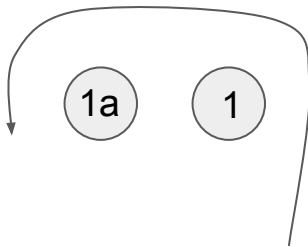
Courses:

- a. Start-W-Finish
- b. Start-W-Gate-1-Finish
- c. Start-W-G2-Finish (hook finish)

\*to sail the course you must pass through the gate  
placing the G1 on port and G2 on starboard



### 3. Windward-Leeward, with offset



Courses:

- a. Start-1-1a\*-2-Finish (single lap)
- b. Start-1-1a-2-1-1a-2-Finish (two laps)
- c. Start-1-1a-2-1-1a-Finish (single lap, downwind finish)



\*1a is the “offset mark” aka “spreader mark”

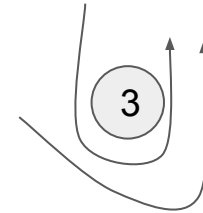
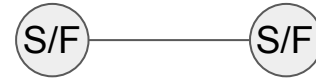
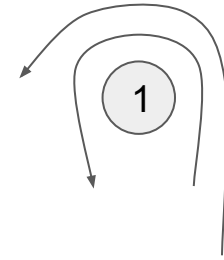
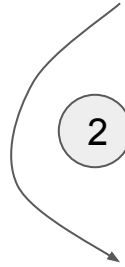


## 4. Triangle

Courses:

- a. Start-1-2-3-Finish (triangle)
- b. Start-1-2-3-1-3-Finish  
(triangle-sausage)
- c. Start-1-2-S/Fs\*-3-Finish  
("figure four")

\*Round the port mark of the  
starting line to starboard



## 5. Leeward Triangle

Courses:

- a. Start-1-2-3-1-Finish
- b. Start-1-2-3-1-3-1-Finish

1

2

3

S/F — S/F

## Distance Race 1: Around X-Buoy

1. Start off of HS Lordship
2. Go through the gap in Berkeley Pier
3. Round X-Buoy to port
4. Go through the gap in Berkeley Pier
5. Finish off of HS Lordship

Total Distance: ~4.7 Nautical Miles

